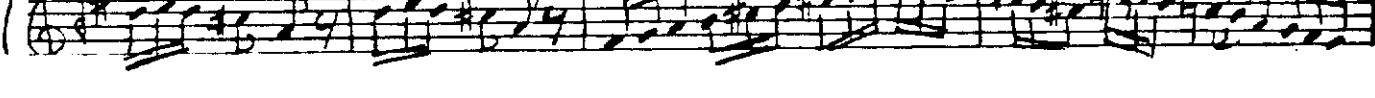
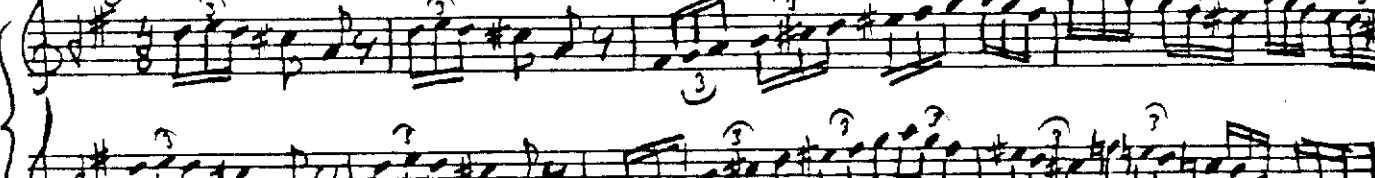
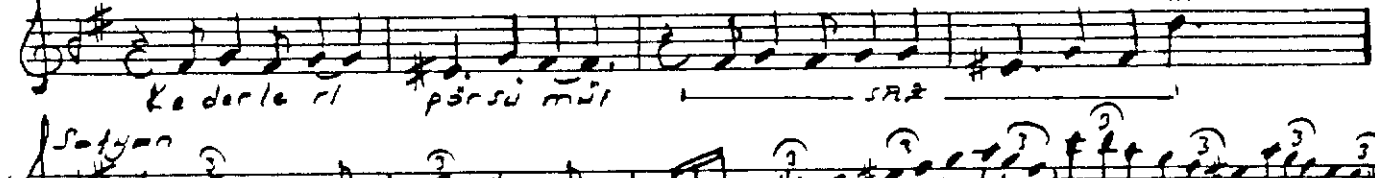
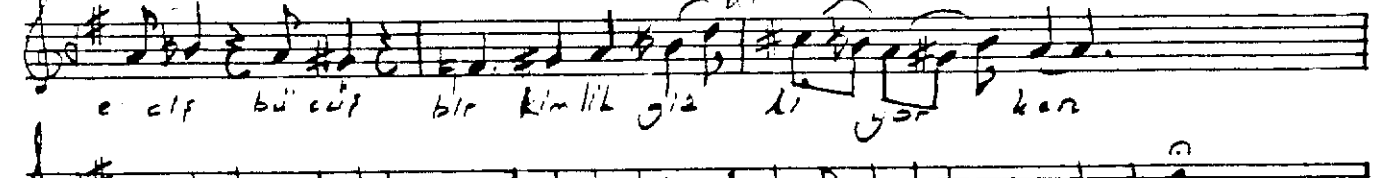
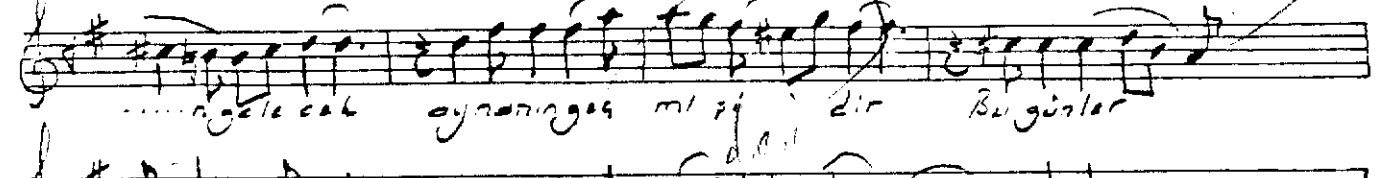
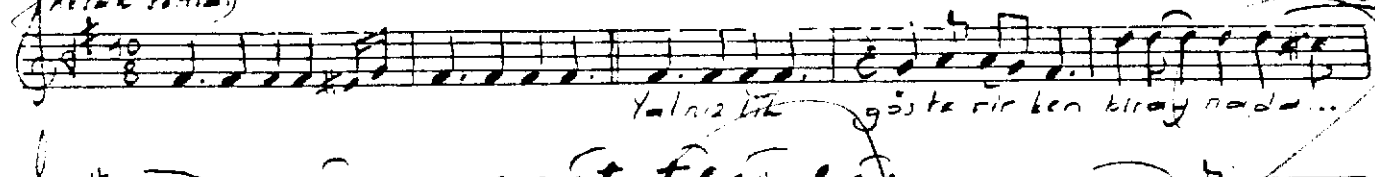
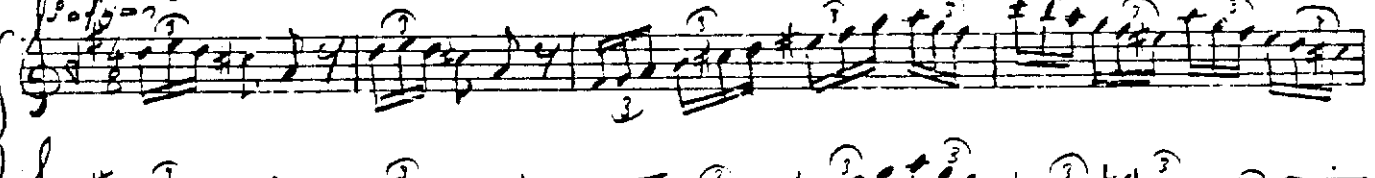
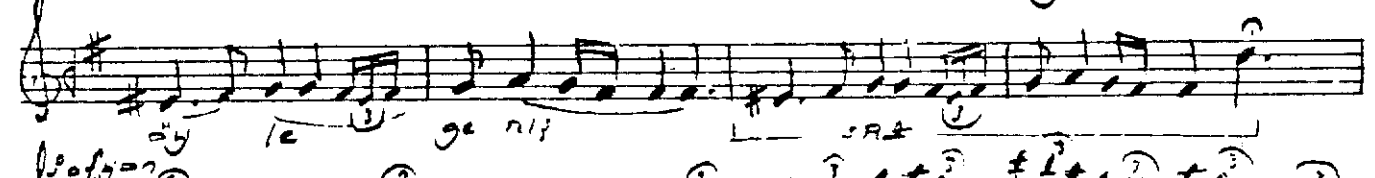
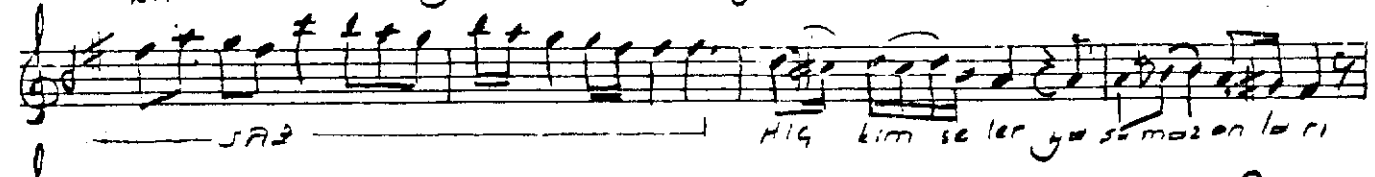
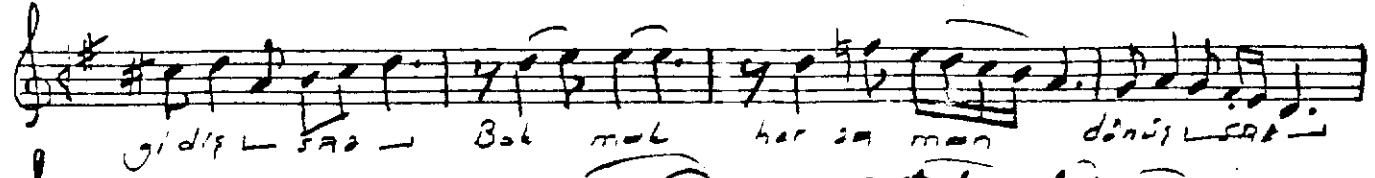
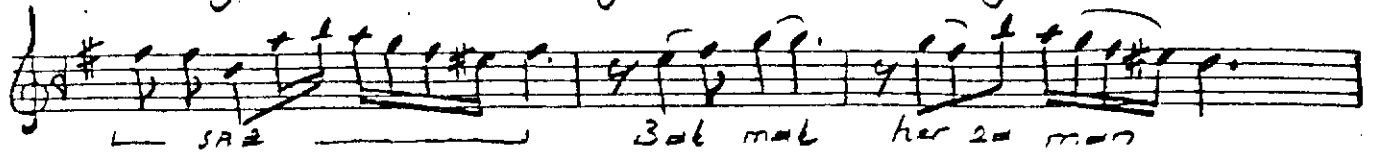


(Usulü: Dağılmeli)

EV YİNELEME SONNET '81

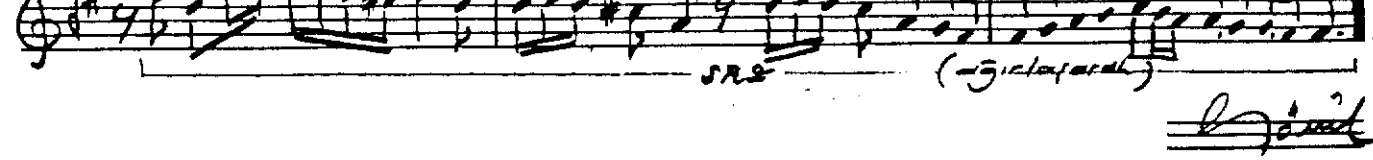
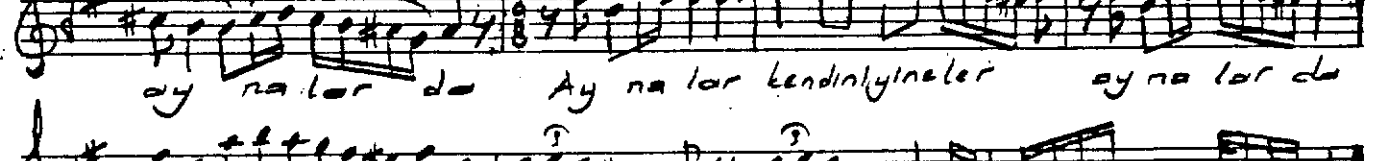
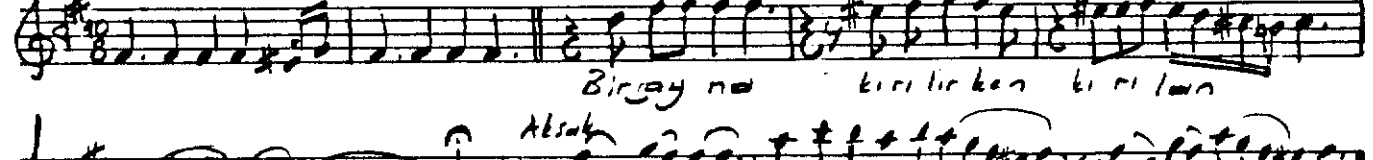
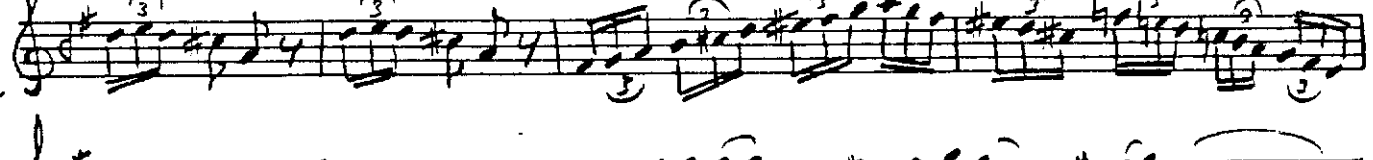
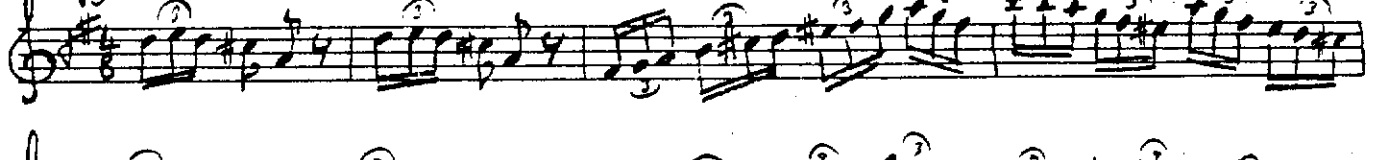
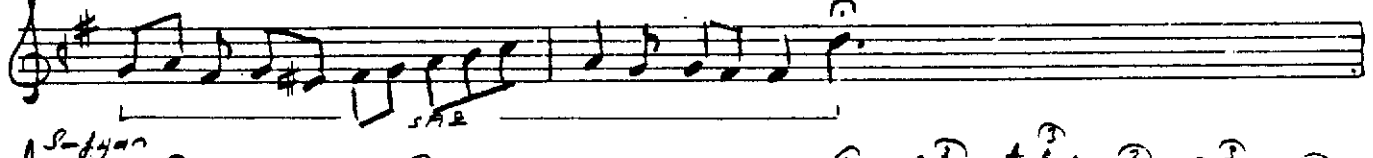
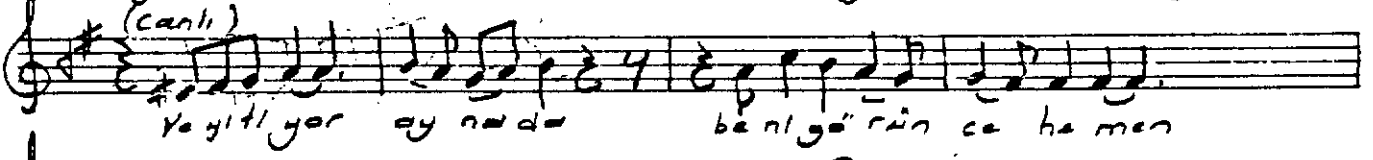
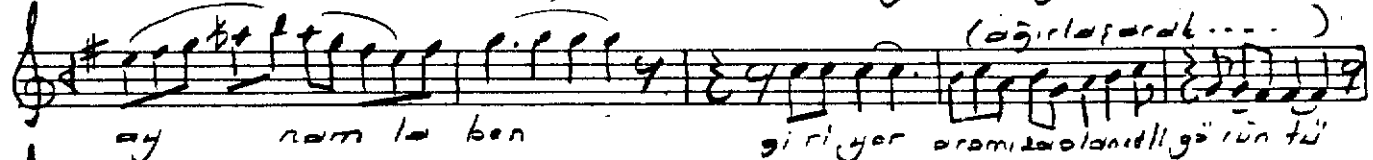
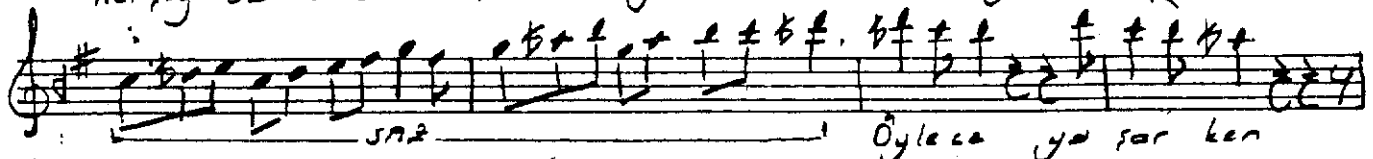
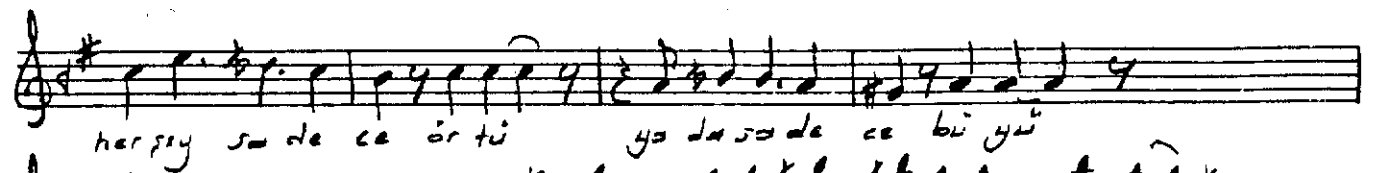
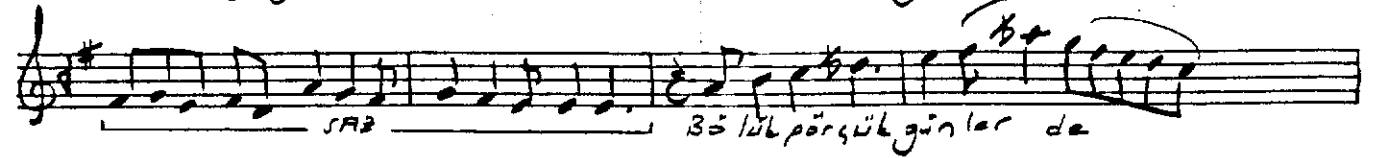
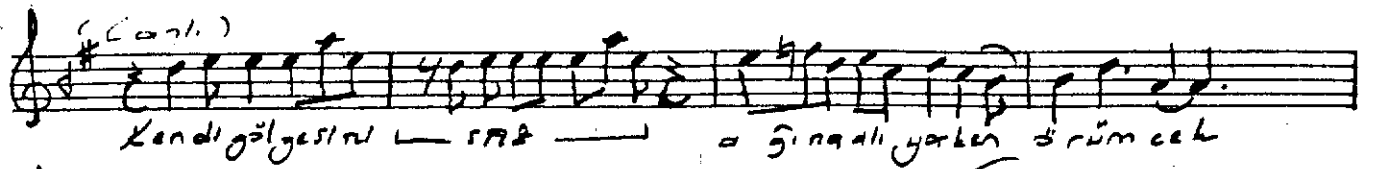
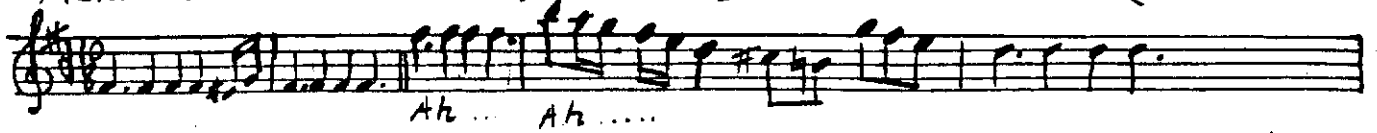
Söz: Hilmi YAVUZ
Müzik: GÖNÜL PAÇACI



Yineleme
terakümü

Alnak senâi:

Figürasyon



so
(girişer aramış olanı...)
girişer aramış olanı gördün mü

y i n e l e m e
s o n n e t' s i

aynalar kendini yineler aynalarda;
bakmak her zaman gidiş, bakmak her zaman dönüş;
bilmezsın, aynaların yüzü elbet solar da,
hiçkimseler yaşamaz onları, öyle geniş
yalnızlık gösterirken bir aynadan gelecek,
aynanın geçmişidir... bugünler ecış бүcüş
bir kimlik gizliyorken, kederleri pörsümüş;
ah, kendi gölgesini ağına alıyorken örümcek;
bölük pörçük günlerde herşey sadece örtü!
-ya da sadece büyü!.. öylece yaşarken aynamla ben;
giriyor aramıza o lanetli görüntü;
ve gidiyor, aynada beni görünce hemen...

bir ayna kırılırken kırılan aynalarda;
aynalar kendini yineler aynalarda...